

MAXICAM
CUTTING EDGE TECHNOLOGY

cutting edge technology



MAXICAM M4-ATC 1530 CNC Router

powell

www.maxicamuk.com



DESCRIPTION

MAXI-M4 Precision CNC router is the perfect choice for the professional machinist, sign-maker, model maker, plastic fabricator, panel maker, wood worker or furniture manufacturer that requires an extremely rigid 3 axis CNC router with 2D & 3D CAD/CAM machining capabilities whilst having the benefit of a 8 position rotary ATC (Automatic Tool Changer).

The M4 is a quality Professional Series CNC router constructed with welded, stress relieved steel frame and gantry with precision Yaskawa servo transmission through Shimpo planetary gearboxes. The drive is delivered by dual helical rack and pinion on the Y axis, single helical rack and pinion on the X axis and ball screw on the Z axis all with zero backlash. Ultra-smooth lubricated for life THK linear rails and guide blocks ensure hassle free machining and minimal maintenance. The machine bed is manufactured with a zoned vacuum clamping system as standard. With positioning speeds of up to 80000mm/min and working speeds of up to 25000mm/min this is a truly versatile heavy duty machine for the professional workshop.

HSD 9KW HSK ATC SPINDLE

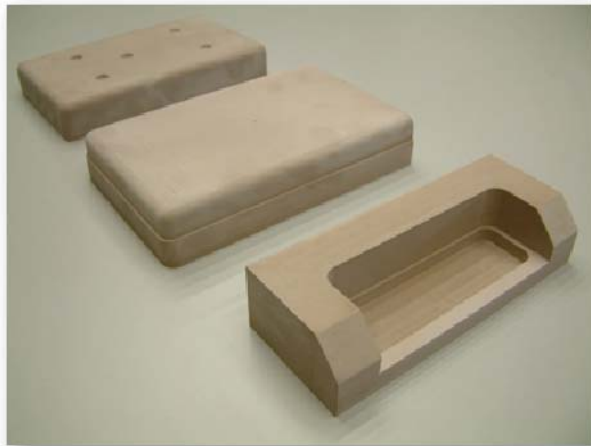
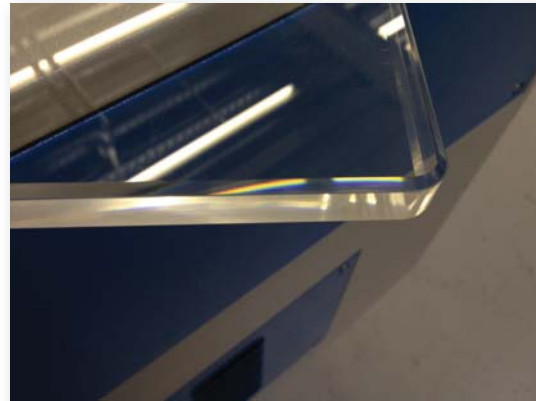


MPG XYZ HANDWHEEL



FEATURES

- Auto Z tool length sensor as standard
- Working area of 1550 x 3100 x 180mm
- HSD 9kw HSK ATC Spindle (HSK superior clamping)
- 8 Position rotary tool changer on gantry
- Helical rack and pinion XY Ballscrew Z
- Inverter for precise speed control of spindle rpm (4000-24000rpm)
- OSAI OPEN NC Controller with part simulation
- Mechatrolink 3 EtherCAT connectivity (Digital)
- Digital closed loop Yaskawa servo motors & drives
- Real time look ahead of 256 blocks
- Windows 10 Pro front end for ease of use
- Network connectivity to design office with NIC
- Zoned phenolic vacuum matrix table with Becker vacuum pump
- Maxicam highly flexible double sheathed, fire resistant towline cable in cable chain carriage
- CE mark certified machine
- Compatible with virtually any CAD/CAM software that generates standard ISO G-Code



APPLICATIONS

- Sign making, letter cutting, logo making, acrylic cutting, engraving on a variety of sheet materials and products
- 2D/3D machining of EPS, EPP, PU and Zotek Foams.
- Relief machining, widely used in the craft and gifts industry
- Machining/engraving of non-ferrous metals (Better with mist cooling option)
- 3D ornamental engraving, woodworking, reproduction furniture and door/panel production (subject to software)
- Model making, pattern making, prop manufacture, 3D surface contour machining
- Restaurant signs, serial plates, identification plates, commemorative plaques, trophies, badges and office signs

CONTROL CABINET WITH DELL PC



SPECIFICATION

No	ITEM	DESCRIPTION	SPECIFICATION	OPTION
1	Travelling Area XYZ	X	1540mm	2040
		Y	3060mm	4060
		Z	300mm	400
2	Table Size		3100 x 3400mm	2200 x 4750mm
3	Accuracy	Working Accuracy	0.05mm	
		Repositioning Accuracy	0.05mm	
4	Structure	Table	Vacuum Table	Vacuum/T-Slot Combo
		Transmission	Helical Rack and Pinion XY, Ball screw Z	
5	Speed	Max Positioning	80000mm/min	
		Max Working	25000mm/min	
6	Spindle	Spindle Power	HSD Industrial 9.0Kw	
7	Drive	Spindle Speed	0-24000rpm	
			Yaskawa Servo Motors, Shimpo planetary gearboxes.	
8	Working Voltage		AC380V/3PH/50Hz	AC415v/3PH/50Hz
9	Software		ArtCam Express	ArtCam Pro
10	Command Code		ISO G-Code	
11	Operating System		Osai 510I	
12	Net Weight		2500kg	3000kg
13	Gross Weight		2800kg	3300kg



CUSTOMER CONFIGURATION

- Travelling area XYZ: 1550 x 3100 x 180mm
- HSD 9.6Kw HSK Long Nose ATC Spindle.
- Tool Rack, 8 positions for HSK 63F tool holders
- Powerful Yaskawa digital servo drives and motors
- Tool sensor for rapid setting of tool length
- Zoned vacuum table with 1 x Becker 250m³/hr pump
- 3 x collets of customer's choice 1-20mm, 1 collet nut and spanner
- 3 x HSK 63F Tool Holder included
- OSAI OPEN Closed Loop NC Control System
- MPG XYZ hand wheel for easy origin and work piece datum setting
- Installation and Maintenance manual
- Tool box with grease gun and spare parts
- Vectric CAD/CAM Software
- 12 month warranty
- Delivery Installation (not unloading) & training
- Safety Fencing and light barriers

BECKER 250M3/HR VACUUM PUMP



ER 32 HIGH PRECISION COLLETS



CENTRAL DUST EXTRACTION



HSK 63F TOOL HOLDER



UPGRADES

- Additional days training on site for up to 2 skilled operatives
- HSK 63F tool holders
- Tooling available from www.powell-shop.com
- Mist cooling option for nonferrous metals
- Add another Becker vacuum pump to 250m3/hr
- High powered central dust extraction system
- Upgrade spindle from 9 to 12kw
- Upgrade 8 pocket to 12 pockets ATC
- Add Pop up material location pins
- Add auto-lubrication system
- Full cover around gantry

MAKE THE MOST OF YOUR NEW CNC INVESTMENT

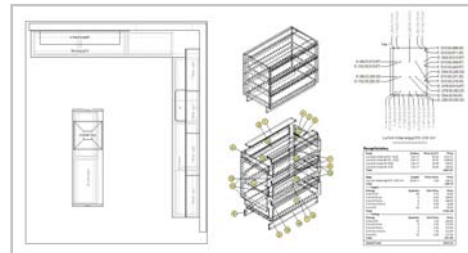
- Fast and accurate parametric design software
- Direct transfer to your machine for manufacture
- Instant pricing and 2D/3D presentations for your clients
- Software includes training and support to get you up and running quickly

Polyboard for Furniture...



Powerful and easy to use:

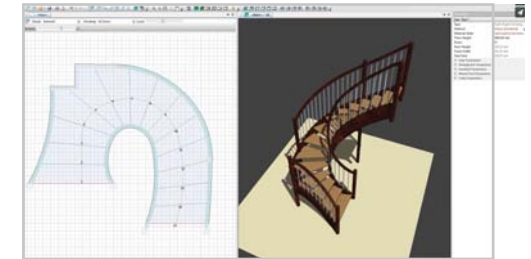
- Fully parametric 2D/3D design
- Simple materials based workflow
- Automatic assembly, manufacturing and hardware management



Instantaneous working documents:

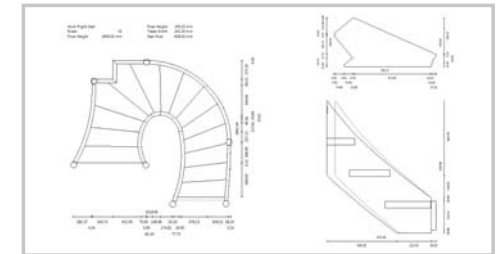
- 100% accurate project plans
- Plans of each unit and each part
- Cutting and materials lists
- Costs dynamically updated
- Maxicam/Powell CNC ready output

and StairDesigner



Design any stair in minutes:

- Straight and winders,
- Curved and geometrical stairs
- Rails and banisters
- Wood, cement and metal stairs



Input dimensions for immediate:

- 2D plans of the stair and all parts
- Real 3D models for verification and client presentations
- Working documents for manufacturing
- DXF files for CNC machining

Seamless integration of your entire design and manufacturing process

M4 PRO CNC

in association with



TWIN BECKER 250M3/HR PUMPS



TOOL LENGTH SETTING DEVICE



ELECTRICAL/INSTALLATION

The customer must supply 3-phase power to the machine by a qualified electrical engineer. The machine must be isolated with a suitable lock out style isolator (for servicing) and rated to 63amps, an additional isolator maybe required if the customer chooses the dust extractor option. The machine requires a clean/dry compressed air supply with 7bar pressure @ 12CFM.

It is the customer's responsibility to make sure the machine is positioned in an area of adequate space to maintain operator safety at all times. Please note

TRAINING

Training is included in the price for a maximum of two operators. The training will last one day and will cover all aspects of machine safety/maintenance, machine operation and software. For competent machine operators and PC users this is normally adequate. Additional machine training is available for our current rate of £550 per day.



TRANSPORT

The machine is priced with delivery to the customer's site included (mainland UK only). Unloading and positioning of the machine is the customer's responsibility, For most machines the use of a forklift truck with fork extensions is adequate. (Please check gross weight for forklift truck lifting capacity) Overseas customers (including Northern Ireland) are responsible for any shipping costs, import duty, tax, freight forwarding charges and transportation.

The delivery date is conditional on receipt of the down payment within the agreed deadline. The metric functional testing of the machine is carried out at Maxicam. For all machines 2m wide and over additional lifting equipment must be supplied to erect the gantry on site. For a complete turnkey service using professional, fully insured machine movers an additional £850 will be charged. Please make sure you inform Maxicam if you require the complete managed unloading/assembly service at the time of order. All installations will be carried out by trained Maxicam engineers.

DELIVERY

Due to the vast array of applications suitable for CNC machines most Maxicam CNC Routers are made to order. Standard specification machines are normally supplied on an 8 week lead time through the factory and 1 weeks testing. Where a machine is built for a bespoke application an extra 2-week build time may be added. All lead times will be confirmed at the time of order.





MACHINE WITH 400MM Z AXIS



CE STANDARDS/WARRANTY

Certificate of Conformity, according to the requirements established in the part A, Annex VII of the machinery Directive, point 1, Annex IV of EMC Directive and Point 3, Annex IV Low-Voltage Directive.

All Maxicam machines come with a 12 month warranty on the machine and mechanical components for normal use. The spindle comes with a 6 month warranty for normal use. If it is deemed that the machine failure is caused by inadequate maintenance or operator error such as incorrect programming then the warranty may be deemed to be void. However, in all circumstances Maxicam will endeavour to fix the problem as quickly as practicable. Maxicam holds spares in stock ready for immediate worldwide dispatch using TNT Express Airmail service. Please note that any parts deemed to have failed must be returned to Maxicam for assessment by our engineers. Failure to return the failed items may result in the replacement parts being invoiced.

Maxicam machines have been designed for continual operation in high production environments, it is imperative that all maintenance schedules indicated in the user manual are adhered to at all times, failure to comply with the scheduled maintenance may result in the machine warranty being void. Maxicam engineers will train the operatives on the preventative maintenance procedures during the machine

